

# Accepting an Initial Callsign Certificate

LoTW requires that you accept your Initial Callsign Certificate using the same computer from which you generated the request for your Initial Callsign Certificate.

These instructions assume that your Callsign Certificate reside in the folder C:\MyLoTWCertificates (if you've stored them in a different folder, adjust the instructions accordingly).

When you receive an email message from the ARRL with an attached file named YourCallsign.tq6 (for example, CT2IRY.tq6),

1. Direct your email application to open the email message.

1.a The attached file contains your Initial Callsign Certificate -- save it into the folder C:\MyLotWCertificates

1.b The e-mail message will contain a Web Account Username and a Web Account Password; be sure to record these, as they are required to view your uploaded QSOs and LoTW-generated confirmations via <https://p1k.arrl.org/lotwuser/default>

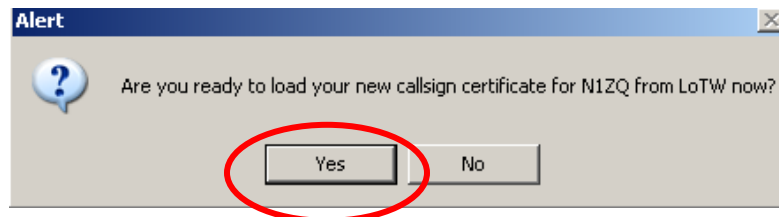


TQ6 file that you will save to your folder.

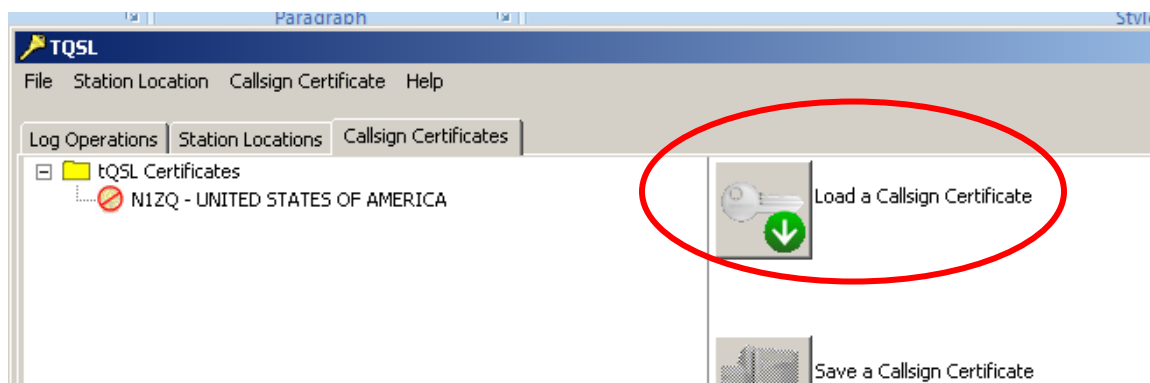
LoTW Username and password

2. To proceed, the YourCallsign.tq5 file must be present in C:\MyLotW\Certificates ; if you deleted this file, or initiated the request from a different computer, you'll have to start over by requesting a new Callsign Certificate from the ARRL.

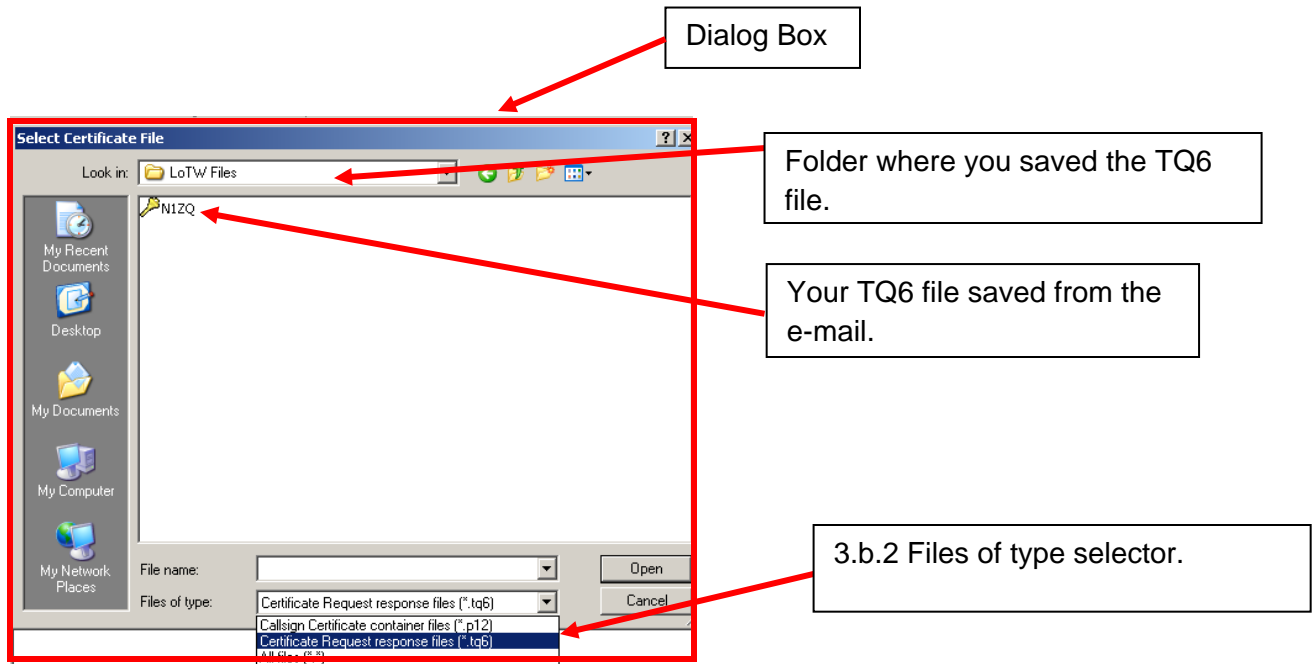
3. Start TQSL and select the Callsign Certificates tab:



3.a When opening TQSL you may be asked if you want to load a certificate. Answer YES and proceed to 3.b.2



3.b Click the Load a Callsign Certificate button; the Select Certificate File dialog will appear



3.b.1 In the Select Certificate File dialog,

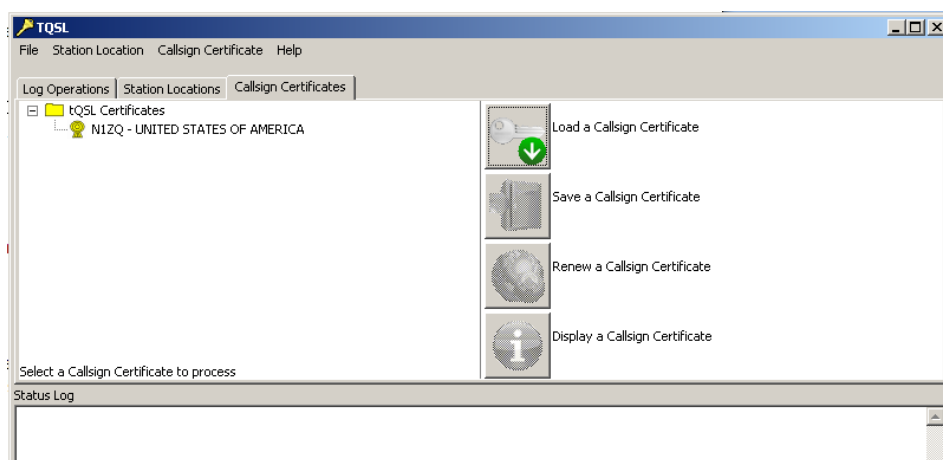
3.b.2 Set the Files of type selector (on OS X, set the Enable selector) to Certificate Request response files (\*.tq6)

3.b.2. Select the file YourCallsign.tq6 in your C:\MyLotWCertificates folder

3.b.3. Click the Open button; a small Install Certificate dialog will appear.

3.c In the Install Certificate dialog, you'll be asked if its okay to install a trusted root certificate; click the Yes button

3.d In the Load Certificate File dialog, click the Finish button.



3.e The Callsign Certificates tab will show an entry for your Callsign Certificate, with a yellow medal valid icon.